



KwikTag T3 Overview: Increased Productivity for Customers

Powerful, Practical and Proven Business Process and Case Management Enhance KwikTag T3

ImageTag strives to provide valuable transactional content management solutions that fulfill your requirements and earn the continued loyalty of all of our customers. Customer feedback drove the enhancements in the KwikTag T3 release, and it is our goal to make an upgrade to the T3 release easy and affordable for every customer.

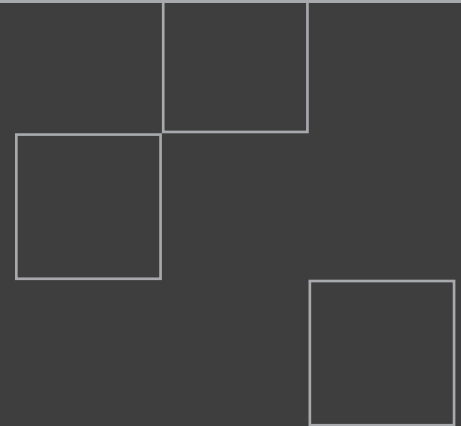
KwikSilver™ Power User Client

Using Microsoft Silverlight, the KwikTag Web client has been rewritten to serve power and light users alike. Silverlight runs in most browsers and can download an offline client, so KwikTag is accessible anytime and anywhere. KwikSilver is an intuitive interface that utilizes the functionality you know and love from the Desktop client, including Move, Copy, Add Index (MDM), saved views, and keyboard shortcuts, and adds inline document viewing, column view selection, drag and drop of electronic documents, and views and screens to support new features such as enhanced searching, configurable and drill-through Intelliview® (document relationships), workflow status and tracking and a case view to support the new Case Management functionality.

KwikApps™ Business-Ready Applications

The KwikTag platform supports solutions with simple capture, retrieval and storage of documents, and added workflow automation in the 4.6x version. KwikApps encompass the capture of documents, workflow templates, document associations, common reports, and exception handling in pre-configured business applications designed for typical document-driven business processes. KwikApps, like the KwikTag platform upon which they are built, are designed for easy and fast implementation business process management solutions for procure-to-pay, order-to-cash, human resources, and an ever-growing library of additional applications. Some KwikApps have Standard and Enterprise versions to accommodate varying complexity.

Requiring only minor personalization of business rule parameters, KwikApps deliver a rapid return on investment with a low packaged cost for the software application and personalization services, and ongoing value in making your business processes more efficient, compliant, and easy for everyone involved.



KwikTag T3 Highlights

KwikTag T3 delivers new functionality and culminates a multi-version process to update core technology:

- New Web client with Desktop client features and more
- Configurable document associations / relationships
- Multi-document case folder management
- Packaged business process applications with reports and templates
- Dynamics ERP process and integration enhancements and new version support
- Advanced capture and auto-indexing methods
- Updated technical architecture, including Windows Server 2008 R2 and SQL 2008 support
- More flexible integration services, new API functions and Web connector
- PDF and color support

Case Management and Advanced Workflow Features

KwikTag T3 adds more advanced workflow capability to automate more of your document processes. Exception processing is more streamlined with rules-based delegation to transfer the approval or rejection of a document or case to another person or role according to definable rules. Escalation rules handle scenarios in which an action is not completed in a timely manner, such as escalating an approval to a supervisor, or produce a report of bottlenecks, or when a continuation of process is desired if a rejection is not warranted.

Recognizing that documents are sometimes related to other documents either in a transactional way (invoice-receipt-purchase order) or in a case file of required and optional documents, KwikTag T3 supplements the Intelliview feature in the Dynamics-embedded clients with platform-side definitions viewable throughout KwikTag. Document associations are configurable and flexible to accommodate user-defined relationships. As mentioned, the KwikSilver Web client includes an easy way to display relationships and drill through them to other related document's detail and images.

Case Management handles multi-document scenarios: multiple documents traveling in tandem in an automated workflow process, or situations where documents are assembled in a case file prior to workflow routing.

Process Flexibility

Start your processes and capture your documents when and where it makes sense for you as KwikTag T3 supports matching of documents to existing transactions in Dynamics, scan first with transaction creation, or a combination so you can remotely enter documents, or centralize.

Enhanced Core Technology and Integration Services

T3 completes the update of the core technology of KwikTag. Using the MVC design pattern, KwikTag T3 components are completely updated to utilize Microsoft .NET technology, REST and Web Services API sets, and eliminate the older COM calls. T3 achieves increased flexibility and extensibility to support continued product evolution, ease of future upgrades and low cost of maintenance. The API sets are versioned so KwikTag will continue to support early APIs, and add new features without requiring rewrite of existing integrations or functionality.

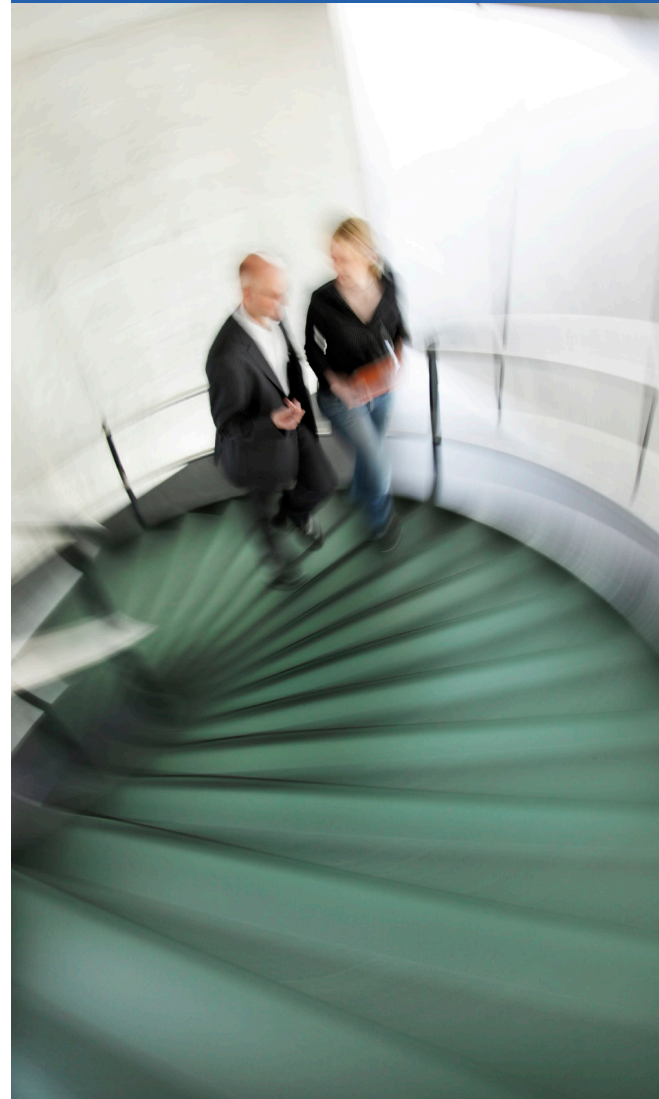
KwikTag T3 now supports Windows Server 2008 R2, Microsoft SQL Server 2008, and newer versions of Microsoft Dynamics including AX 2012, GP 2010R2 and NAV 2009R2. In addition to the new Web client, KwikSilver, the Paper Gateway image processing engine has been updated comprising paper, electronic documents, and other electronic files, and renamed eGate™. The eGate data gateway offers increased deployment options and componentization, optimized configurability and scalability.

Capturing Potential, Unleashing Productivity

Contact ImageTag to discuss the best method to upgrade your KwikTag platform, and which new features or KwikApps will increase your organization's productivity.

“KwikTag T3 is so named for being the third generation of transactional content management. Our goal is to make products that are powerful, but remain practical to buy, install and maintain.”

- Randy Eckel, CEO, ImageTag, Inc.



ImageTag, Inc.

1400 East Southern Avenue, Suite 800
Tempe, Arizona 85282

tel. 480.753.9300

fax. 480.753.9400

1.888.KWIKTAG | sales@kwiktag.com

Copyright © ImageTag, Inc. All rights reserved. KwikTag, the KwikTag logo, ImageTag, and the ImageTag logo are registered trademarks of ImageTag, Inc. Microsoft Windows Server and SQL Server Express are registered trademarks of Microsoft Corporation.