



KwikTag Integration Services

Powerful, Practical and Proven Extensibility to Other Applications

KwikTag was designed as a platform made to be leveraged by numerous client user interfaces and from virtually any application so that best-of-breed content management is provided in the context of business processes and their business systems. Built on core Microsoft .NET 4.0 technology, KwikTag's layered architecture supports a number of integration services including import/export, a full set of Application Programming Interfaces (APIs), and mapping templates.

KwikTag offers open and standard means to accept and export scanned paper and electronic documents and document meta-data. Integration may also incorporate other relevant data from other systems, such as transaction validation data, workflow status updates, and user hierarchies or authorities for workflow approval delegation or escalation. KwikTag includes representational at state transfer (REST) and Web Services API sets, mapping to on-screen fields for meta-data capture, Web application integration points, import/export services, integration services, as well as integration via the KwikTag eGate™ data gateway.

Partnering for Success

Beyond providing access to the KwikTag Software Development Kit (SDK), ImageTag works closely with ISVs, partners and customers to ensure the success of their integration. Here are just a few examples of successful integrations.

Solution: Purchase Requisition Management

Objective: Document-enable the ISV's purchase requisition application, so that digitized paper or electronic documents can be accessed 1) from the Purchase Requisition application; 2) from within the Dynamics GP transaction; and 3) from a Web browser for executive review.

Integration: The ISV employed KwikTag API calls to support barcode assignment to paper documents as well as drag-and-drop or browse functionality to associate electronic purchase quotes or related correspondence (including emails). This document capture functionality was enabled within the ISV Purchase Requisition application; the same functionality is supported by KwikTag within GP, with document and data access extended to a KwikTag Web interface.

Increase Productivity without Interrupting Business Processes

KwikTag integration creates a seamless user experience—so users never have to leave their familiar application environment to incorporate content management.

KwikTag is Open for Business

Wherever transactional business applications depend on electronic or paper documents, or require workflow automation, KwikTag integration can provide a flexible solution with multiple integration touch points. Other examples include:

- Microsoft InfoPath and Office integration
- Other ERP systems including QuickBooks, Sage, Infor, Oracle and SAP
- Third party (and proprietary) HR system integration
- Expense management receipt filing
- KwikBatch™ acceptance of external barcodes and batch meta-data entry
- EDI/XML file integration
- Security hierarchy import
- SharePoint or other portal integration

Solution: Purchase Requisition Management, continued

Results:

- Simple, effective document capture and instant retrieval of purchase quotes, invoices, and packing slips
- Instant document retrieval within the Purchase Requisition application and/or related GP transactions
- Instant audit by executives of all transactions and documents (including approval details) from any Web browser

Solution: Field Service Management

Objective: Document-enable the ISV's field service forms within Microsoft Dynamics GP, so that digitized paper or electronic documents can be accessed from the ISV's custom GP field service screens, standard Dynamics GP transactions, or from a Web browser.

Integration: The KwikTag for GP Connector is flexible to map to any custom GP form data fields so that KwikTag becomes embedded in that screen menu and enables all KwikTag actions including document capture, or tagging, from that form, related document viewing, global search, and workflow work queues. The integration leveraged KwikTag mapping, workflow configuration and the KwikTag eGate as a touch point to capture field service documents and attach them to the appropriate ISV-created GP forms.

Results:

- Document capture of signed customer documents and instant retrieval from custom field service forms in GP
- Automatic matching of signed version of document to relevant transaction

Solution: Non-Dynamics ERP Integration

Objective: Document-enable the customer's ERP to support document management for payables processes.

Integration: KwikTag integration services are employed to load table data from the ERP to KwikTag drawers, and an export of KwikTag data to automatically create the payables voucher transactions in the ERP after all approvals are complete.

Results:

- Single data entry point for transaction information in KwikTag
- Time savings and avoidance of exception processing as KwikTag validates the uniqueness of the invoice number for any vendor at the point of entry
- Efficiency in processing with document routing through management approval hierarchies depending on standard business rules such as dollar value authority levels and department

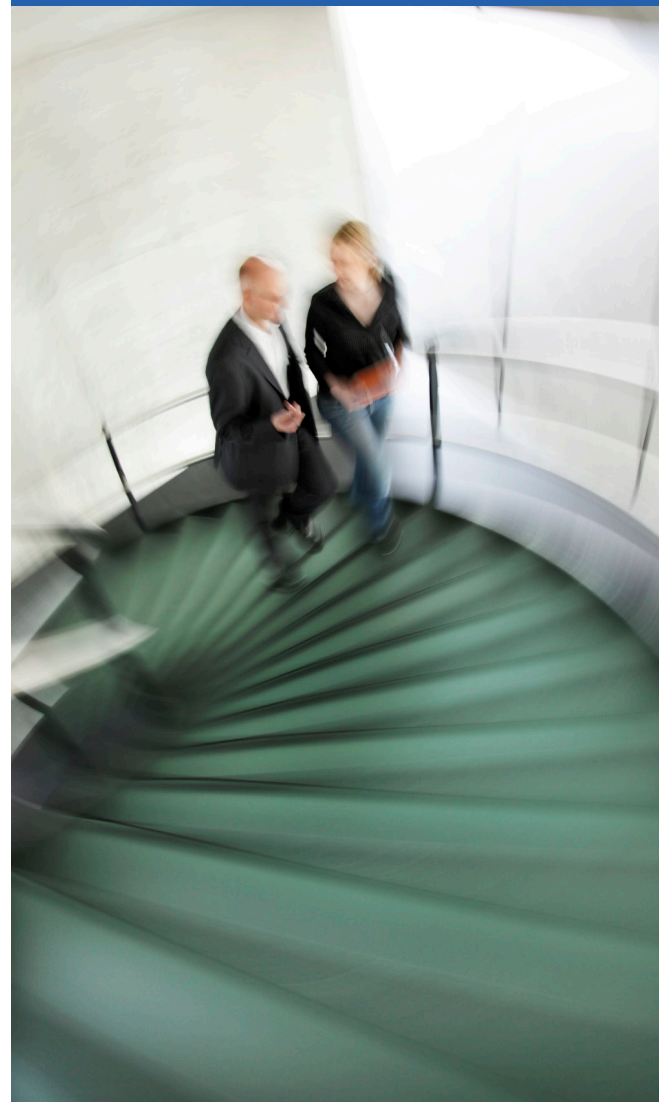
Capturing Potential, Unleashing Productivity

KwikTag provides a simple, yet powerful solution for content management in the context of your business transactions and systems – that's Transactional Content Management in action.

Contact ImageTag to discuss the best method to integrate your application with KwikTag and document-enable your solution.

“With KwikTag, we are now able to store our A/P and A/R documentation directly from our Dynamics system. We are saving a tremendous amount of time, money and resources.”

– Bill Blyth, CIO, Oldcastle Precast



ImageTag, Inc.

1400 East Southern Avenue, Suite 800
Tempe, Arizona 85282

tel. 480.753.9300

fax. 480.753.9400

1.888.KWIKTAG | sales@kwiktag.com

Copyright © ImageTag, Inc. All rights reserved. KwikTag, the KwikTag logo, ImageTag, and the ImageTag logo are registered trademarks of ImageTag, Inc. Microsoft Windows Server and SQL Server Express are registered trademarks of Microsoft Corporation.