



Connecting People, Process and Paper



Overview

KwikTag document imaging software for Microsoft Dynamics GP and NAV captures and organizes paper and digital artifacts as they intersect mission-critical business applications and processes. KwikTag was designed to easily fit within the sophisticated construct of your unique IT environment. This turnkey solution offers a robust platform delivered on the KwikTag Distributed Capture Appliance (DCA).

Designed with the IT department in mind

- Industry standard Microsoft Stack allows interoperability with other IT Infrastructure
- Supports existing network controls, disaster recovery and storage subsystems, or provides a stand-alone solution
- Eliminates or significantly reduces the need for separate hardware or storage facilities
- Rapidly improves time to production
- Reduces TCO by fully leveraging existing infrastructure for data protection, security and business continuity
- Turnkey deployment with integrated management and maintenance tools delivered via the client
- Software upgrades and maintenance updates are delivered via the Internet, reducing downtime
- Enables imaging where paper volume is high, document intake is geographically dispersed or where categorically different types of documents are combined

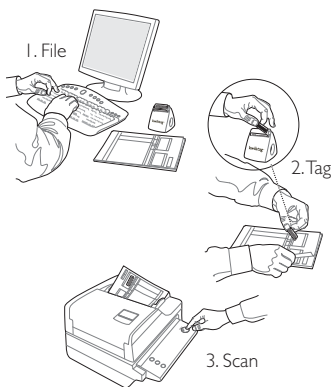


Unique capabilities for GP and NAV

- **Data Mapping Tool** - Configurable integration tools provide easy and efficient mapping between the image repository, the metadata database and GP or NAV modules, forms and fields
- **IntelliView™ Technology** - Configurable tool-set image-enables unique process flows and document intersection points within the organization by creating relationships between documents common to a business process
- **Multi-site Security** - Document retrieval in-line with established security settings in GP or NAV, allowing users access to only the documents in their assigned databases
- **On-Board Storage** - The KwikTag DCAs offer storage repositories allowing the capture of millions of documents and pages and their corresponding metadata
- **KwikTag Sync-Up Service™** - The KwikTag DCA provides automatic software upgrades, patches and service packs via a secure subscription News service saving time and money relative to patch management and manual upgrade costs

KwikTag Accommodates any Department

KwikTag addresses any paper-burdened department by making all of your business-related paper and other electronic documents instantly available for viewing, sharing and forwarding. KwikTag's optional integration with Microsoft SharePoint enables universal access to documents so you can efficiently investigate, manage and resolve inquiries in real-time.



How KwikTag Works:

Simple, Three-Step Process

1. **FILE:** Complete your normal data entry in Microsoft Dynamics GP or NAV.
2. **TAG:** Place the KwikTag Label on the lead page of the document.
3. **SCAN:** When convenient, take the tagged document(s) to any office scanning device (digital copier, scanner, fax machine) and press the 'scan' button. KwikTag automatically links each scanned document to the related GP or NAV transaction.

Retrieving Documents is Even Easier

Retrieve supporting documentation directly from GP, NAV or the KwikTag Client. KwikTag provides file formats in TIFF or PDF for paper, or electronic documents, including email with attachments.

Distributed Capture Appliance (DCA) Delivery

Based on Microsoft Technologies, this turnkey solution includes all the components that are required to run KwikTag. The application software, hardware and operating system are bundled to simplify the acquisition, installation, deployment and maintenance of the system.

A Turnkey Solution

- Includes pre-installed server hardware and software
- Plug-and-Play technology is ready for immediate use
- Eliminates need for additional software or licenses
- Optimized for KwikTag document imaging
- Eliminates need for expensive travel because all setup is done remotely

Single Source for Support

- The entire solution, including hardware and software is supported by ImageTag to a stringent SLA
- Automated maintenance updates

This innovative delivery model is available in a variety of specifications to match your specific solution requirements, such as number of users or volume of documents and pages.

